

SHARP®

FO-DC525



Document Communication System



Fast. Powerful. Flexible.



SHARP®

With advanced features, proven performance, and Sharp's award winning reliability, the FO-DC525 Super G3 Document Communication System is a smart multifunction solution for today's business.

Designed for today's accelerated business pace, The Sharp FO-DC525 Super G3 Document Communication System is an ideal choice for your growing business. With Super G3 modem technology, JBIG compression, and speedy scanning at 1.3 seconds, the FO-DC525 will jump start your productivity. Innovative features include a 4.7" tilting LCD status display for easy viewing, and convenient auto-dial phone books. To help keep your productivity at peak performance, a generous 750-sheet letter/legal paper supply is standard. And with 8 MB standard flash memory (maximum 16 MB) and completely modular components, the FO-DC525 can easily accommodate the needs of growing businesses.

With a quick 16 page-per-minute engine, the FO-DC525 offers a broad range of multifunction options to enhance your workflow. With optional network scanning, network printing, web-based management, and remote diagnostics—you can be more productive than ever. And with Sharp's intuitive software, it's never been so easy.

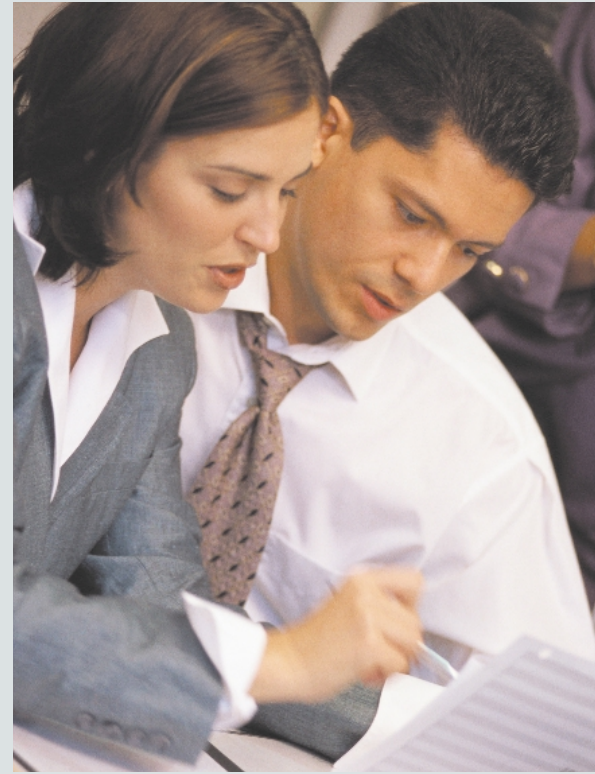


FO-DC525

FO-DC525

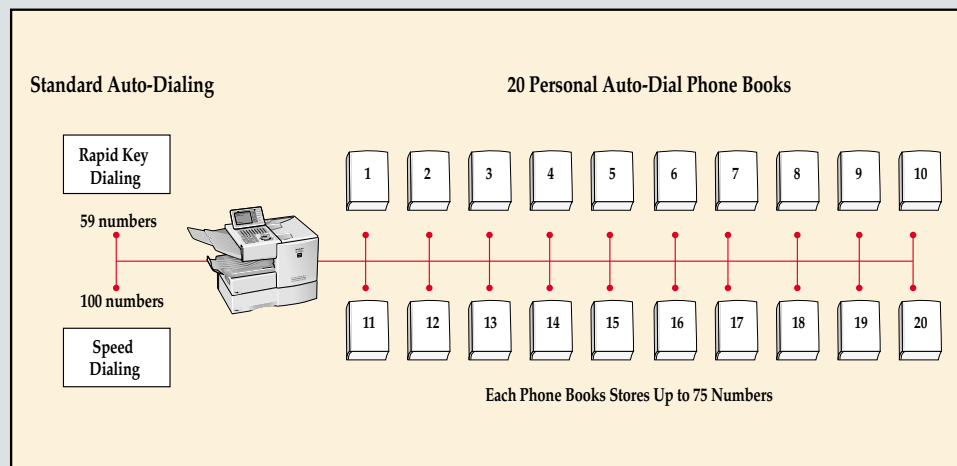
at a glance

- Super G3 33.6 Kbps Modem
- 2-Second Transmission Time*
- 1.3-Second Quick Scan
- 400 dpi Ultra-fine Transmission
- 8 MB Flash Memory (stores approximately 500 pages); Upgradeable to 16 MB (stores up to 1000 pages)*
- Large 4.7" Tilting LCD Status Display
- 50-Sheet Automatic Document Feeder
- 10" Scanning Width
- Duplex Scanning
- Dual Access
- 16 Page-Per-Minute Print Speed
- Document Memory Backup
- 59 One-Touch Rapid Dials
- 100 Coded Speed Dials
- 20 Personal Auto-Dial Phone Books with a Storage Capacity of up to 75 Numbers in Each
- Serial Broadcasting to 179 Locations/Personal Auto-Dial Phone Books up to 74 Additional Locations per Book



Advanced Auto-Dialing provides enhanced productivity

With the most advanced dialing capabilities in its class, the FO-DC525 Document Communication System is a true performer. In addition to 59 rapid dial (one-touch) keys and 100 speed dial (abbreviated) codes, the FO-DC525 also offers 20 personal auto-dial phone books that enable users to store up to 75 numbers in each, for a total of 1500 additional numbers. Busy offices that have several departments using the same FO-DC525 can assign a personal auto-dial phone book to each of them, which is easily accessed by a PIN number. With all this built-in auto-dialing efficiency, you'll never have to manually dial a number again!



Uncompromising speed, performance, and reliability make the new Sharp FO-DC525 Super G3 Document Communication System an outstanding value in its class.

LARGE, EASY-TO-READ 4.7" TILTING STATUS DISPLAY

The FO-DC525 Document Communication System features an ergonomic 4.7" tilting LCD status display to make reading easier. And, with a user adjustable viewing angle of up to 65 degrees, the status display can be easily positioned for optimum clarity.



FLEXIBLE PAPER SUPPLY

The Sharp FO-DC525 Super G3 Document Communication System comes standard with a generous 750-sheet paper supply. The 250-sheet and 500-sheet letter/legal paper trays can easily meet the needs of busy offices and workgroups.



INTELLIGENT DOCUMENT HANDLING

The FO-DC525 engine design delivers all received documents face down. This means multiple page fax receptions are always printed in the correct order, so there's no need to reshuffle the pages when you retrieve them from the exit tray.



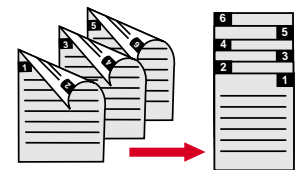
Face-down delivery

FLASH MEMORY PROVIDES RELIABLE DOCUMENT STORAGE

Sharp's flash memory ensures that your documents will be stored safely in the event of a power failure. The FO-DC525 comes standard with 8 MB of flash memory, which can store up to 500 pages.* As your business needs grow, you can expand the memory to up to 16 MB, for a total of up to 1000 pages.*

DUPLEX SCANNING SAVES TIME AND MONEY

Standard duplex scanning allows users to easily transmit two-sided documents—without having to make a trip to the copier first to separate the pages. The FO-DC525 scans both sides, then transmits the pages in the correct order.



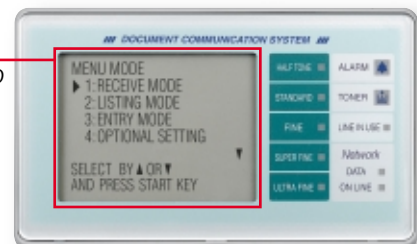
SECURE FAX RELEASE

To protect your received fax documents from unauthorized viewing, the Sharp FO-DC525 offers a Secure Fax Release feature, which requires users to enter a 5-digit PIN code in order to release and print documents.

INTUITIVE EASY-TO-USE INTERFACE

Operating and programming the FO-DC525 is easy and predictable. With the large 4.7" LCD status display and logically arranged keypad and menus, you'll know how to use the FO-DC525 in minutes.

The large, 4.7" LCD screen displays up to eight lines of text. And since it tilts up to 65 degrees, the FO-DC525 is easy to read at almost any angle.



*Based on ITU-T Test Chart #1 in standard resolution.

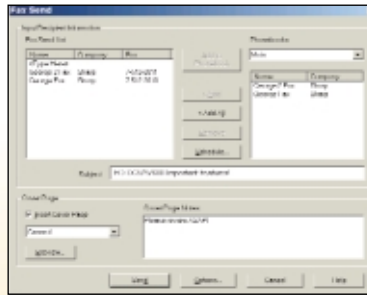
Enhance your workflow with modular options as your business needs evolve.

The new Sharp FO-DC525 Document Communication System won't let you down—even if your workflow requirements change. Designed to grow with your business, you can easily transform the FO-DC525 into a complete multifunction solution that delivers network scanning, network printing, web-based management, and advanced diagnostics. And with Sharp's integrated software, adding these efficient options has never been easier.



INTEGRATED NETWORK SCANNING

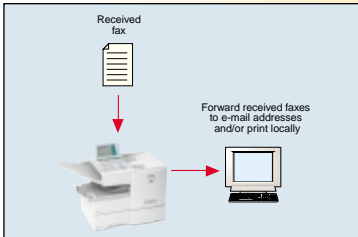
With Send to Desktop, Send to E-mail, Send to FTP, and Send to Group (e-mail/fax mixed), and Sharpdesk™ Document Management Software, you can send your documents across the network or across the world. And with LDAP support, there's no need to manually enter a recipient's address. Sharp's Integrated User Authentication reduces the risk of unauthorized scanned documents being e-mailed by requiring users to log in.



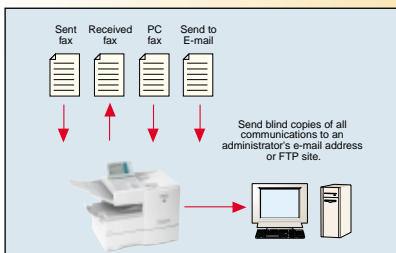
PC LAN FAXING With Sharp's powerful LAN Fax function, users can transmit documents right from their desktop PC! (requires FO-LN1)



NETWORK PRINTING Transform the Sharp FO-DC525 into a robust 16-ppm laser printer with the PCL6 Network Printing Kit. Included is Sharp's Printer Status Monitor and Printer Administration Utility for easy operation and management.



INBOUND ROUTING Inbound Routing allows received faxes to be automatically forwarded to e-mail addresses for easy retrieval by PC users.

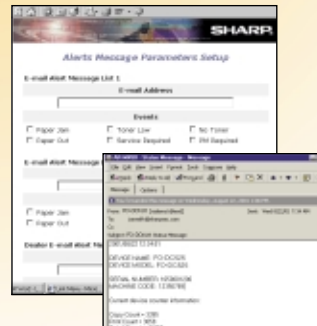


ADVANCED DOCUMENT ADMINISTRATION With Sharp's Advanced Document Administration function, blind copies of all sent/received faxes, PC faxes, and Send to E-mail documents can be forwarded to an administrator's e-mail address or FTP site. This convenient feature enables businesses to keep electronic records of all communications.



LAN-BASED REMOTE MANAGEMENT

With F.A.S.T. (Facsimile Automated Service Technology) Remote Diagnostics System, your authorized Sharp dealer can monitor and diagnose potential problems right over the Internet—minimizing costly downtime.



REMOTE E-MAIL DIAGNOSTICS

With Remote E-mail Diagnostics (R.E.D.) users, administrators, or your Sharp service providers can automatically receive e-mail messages regarding specific conditions of the FO-DC525—so your workflow keeps moving.

FO-DC525 KEY FEATURES

- › Super G3
- › Document Memory Backup (Flash)
- › Duplex Scanning
- › 400 dpi Ultra-fine Transmission/Reception
- › 59 One-Touch (Rapid) Dials
- › 100 Abbreviated (Speed) Dials
- › 20 Personal Auto-Dial Phone Books; 75 Numbers Each
- › 4.7" Tilting LCD Status Display Tilts 10 to 65 Degrees
- › Standard Group Dialing Up to 59 Groups, 158 Locations/Personal Auto-Dial Phone Books up to 74 Additional Locations per Book
- › Standard Polling up to 179 Locations/Personal Auto-Dial Phone Books up to 74 Additional Locations per Book
- › Standard Serial Broadcasting to 179 Locations/Personal Auto-Dial Phone Books up to 74 Additional Locations per Book
- › 59 Program Keys
- › Confidential Transmission/Reception (10 mailboxes)
- › Chain Dialing
- › Anti-Junk Fax (50 locations)
- › Department Codes (99)
- › Telephone-Billing Codes (up to 9 digits)
- › Secure Fax Release
- › Batch Transmission (any rapid dial key; up to 59 jobs)
- › Auto Reduction Printing
- › Print Smoothing
- › Quick On-Line
- › Automatic Cover Sheet Insertion
- › Dual Access
- › Flash ROM Updates from Built-in Port
- › Auto Cassette Switching
- › Automatic Fax Separator Page
- › Verification Stamp (optional)

SPECIFICATIONS

Applicable Telephone Line:	Public Switched Telephone Network (PSTN)		LAN Interface Expansion Kit FO-LN1 (optional)	
Compatibility:	ITU-T G3		Operating System:	Windows® 98/ME/2000/NT4/XP
Configuration:	Half-duplex desktop transceiver		Protocol/Type:	TCP/IP / 10/100 baseT Ethernet
Compression Scheme:	MH, MR, MMR, JBIG, Sharp special		Web-based Management:	Standard
Memory Size:	8 MB Flash Memory (approximately 500 pages) includes Document Memory backup; upgradeable to 16 MB (approximately 1000 pages)*		PC-LAN Faxing:	Standard
Modem Rate:	33,600 bps with auto fallback*		Network Scanner Expansion Kit FO-NS2 (optional)**	
Transmission Time:	2 seconds per page*		Scan Resolution:	400 dpi (true optical)
Scan Speed:	1.3 seconds per page		Data Format:	PDF, TIFF
Print Speed:	16 pages per minute		Document Management Software:	Sharpdesk (includes OCR)
Resolution in Text Mode:	Standard:	200 x 100 dpi (100 lines/inch)	Send to E-mail/Desktop/FTP:	Standard
	Fine/Halftone:	200 x 200 dpi (200 lines/inch)	Send to Group (e-mail/fax mixed):	Standard
	Super-fine:	200 x 400 dpi (400 lines/inch)	Inbound Fax Routing:	Standard
	Ultra-Fine:	400 x 400 dpi (400 lines/inch)	Advanced Document Administration:	Standard
Recording System:	Laser		Network Printing Expansion Kit FO-NP1 (optional)**	
Reception Modes:	Auto/Manual		Print Speed:	16 ppm
Effective Scanning Width:	10.0 inches		Print Resolution:	600 dpi
Effective Recording Width:	8.0 inches		Printer Description Language:	PCL6/PCL XL
Paper Capacity:	250 + 500 letter/legal cassettes 750 sheets total		Memory:	16 MB; 144 MB maximum
Paper Stack Capacity:	200 sheets		Accessories & Options	
Input Document Size:	<ul style="list-style-type: none"> • Width: 5.8" to 11" (148 mm to 280 mm) • Length: 5.0" to 19" (128 mm to 432 mm) 		8 MB Flash Memory:	FO-8MK
Automatic Document Feeder:	50 sheets maximum		LAN Interface Kit:	FO-LN1
LCD Display:	4.7" QVGA screen 320 x 240 dpi		Network Scanner Expansion Kit:	FO-NS2
Halftone (grayscale):	64 levels		Network Printer Expansion Kit:	FO-NP1
Copy Function:	Single/Multi-copy/Sort-copy (99 copies/page)		Verification Stamp:	FO-45VS
Power Requirements:	120 V AC, 60 Hz		Deluxe Cabinet:	FO-44ABD
Remote Fax Management:	EA.S.T. PSTN/LAN-based diagnostics system**		Sharp Genuine Supplies for the FO-DC525	
Dimensions:	21.5"(W) x 16.2"(D) x 17"(H)		Toner Cartridge:	FO-50ND
Weight:	48.5 lbs.		Drum Cartridge:	FO-47DR

Design and specifications subject to change without notice.

Sharp is a registered trademark of Sharp Corporation. All other trademarks are property of their respective holders.

* Based on ITU-T Test Chart #1 in standard resolution. Actual transmission time will vary based on line conditions.

** Requires FO-LN1 LAN Interface Expansion Kit.



As an ENERGY STAR® Partner, SHARP has determined that this product meets the ENERGY STAR® guidelines for energy efficiency.



Sharp Electronics Corporation
 Sharp Plaza, Mahwah, NJ 07430-1163
 1-800-BE-SHARP
www.sharppusa.com